



PURPLE CANE TEA HOUSE



The Purple Cane Tea House is located on the ground floor of an existing three-storey historical colonial building in the heart of Ipoh which used to be occupied by a famous 'dim sum' restaurant. Appreciating the history of the venue, the designers sought to preserve the value and character of the place. The brief called for a restaurant serving 'tea' food that has a seating capacity of 80 with a kitchen, and a retail space for tea products or a 'tea market'. To fulfil the requirements of the brief, the existing dining hall was converted into a retail area while the courtyard was turned into a garden restaurant.

GOING NATURAL

The designers adopted a no-frills and austere approach to create a rustic ambience. This means stripping bare the materials and construction for a natural look. Apart from reusing existing fittings, recycled and raw materials were also used. Red bricks were used for the external courtyard wall. The marble tiles on the walls and columns from the previous owner were retained and refurbished. The display shelves, tea tables, tea chairs and tea platform are all made from reclaimed timber sourced from old timber houses in Ipoh; even the "blemish-like" existing paintwork on the reclaimed timber post was kept to match with the flooring. To draw attention to the products being displayed, the shelves in the retail space are designed with minimal details and paired with mild steel frames. In the tea houses, tatami floor mats made of woven soft rush straw are used.

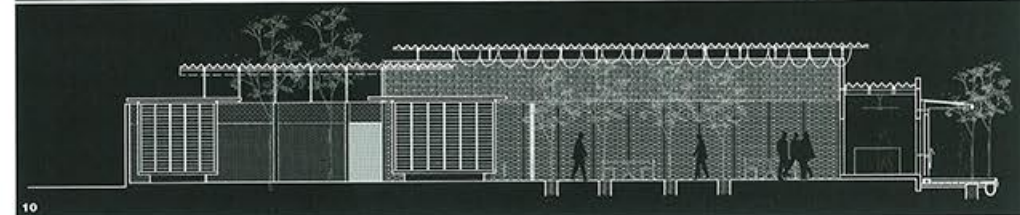
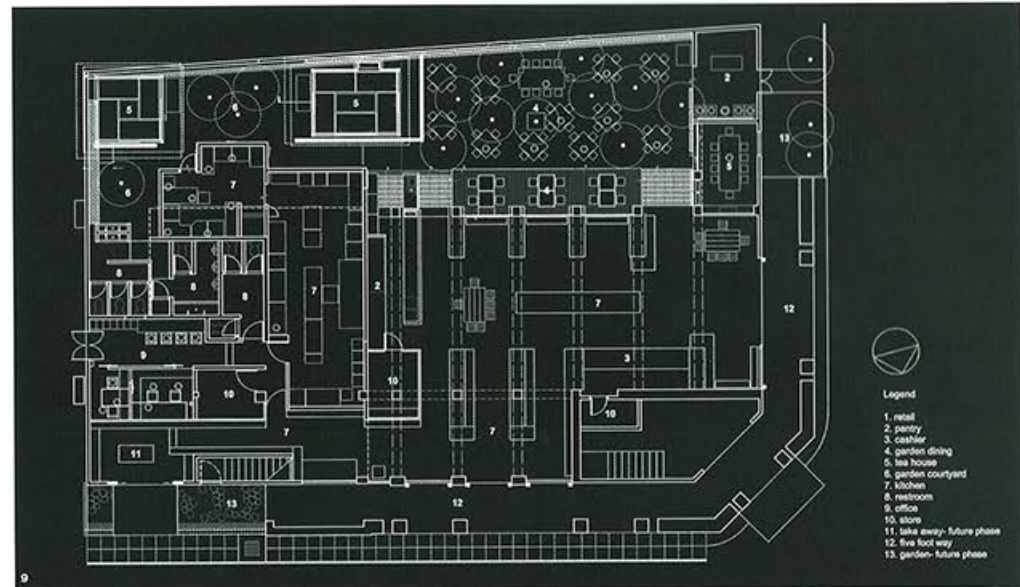
COURTYARD

The main dining area in the courtyard is designed with a skylight roof to allow for daylighting. To protect diners from the glare and heat during the day, the designers came up with the creative idea of using strips of reused gunny

1 & 2 Strips of gunny sack hung below the skylight roof in the courtyard dining space protect diners from the glare and heat of the day
3 & 4 Charcoal wall ■ Tea chairs made from reclaimed timber



PROJECTS



sacks to provide shading. The series of 'undulating' gunny sacks hung below the skylight with planted climbers not only helps to regulate and filter the amount of light coming into the courtyard, but, together with the trees, they also create an interesting shadow play at different times of the day. Apart from the main dining area, the two tea houses are also separated by a mini courtyard that draws in abundant sunlight during the day. To enhance the garden dining experience, the main dining area in the courtyard is planted with trees. This dining area is also actually cooled since it is located within the courtyard.

To segregate the pair of tea houses catering for private functions from the main dining area, the designers decided to erect a charcoal wall—formed by filling BRC steel cages with charcoal pieces—to create a more intimate environment for its patrons. Known for its "absorbent" quality, the charcoal screen wall not only functions as a separator or even as an unusual feature, but it also aids in reducing smell and noise.

6 Interior view of the tea house 7 Charcoal wall overlooking the courtyard garden
8 Mini courtyard between the two tea houses 9 Floor plan 10 Section

PROJECT DATA

Project Name
Purple Cane Tea House
Location
Osborne Street, Ipoh, Malaysia
Completion
October 2010
Site Area
640 m²
Gross Floor Area
530 m²
Number of Rooms
NA
Building Height
NA
Client
Purple Cane Sdn Bhd
Owner
Perak Chinese Amateur Dramatic Association
Design Firm
tetavowe atelier
Principal Architect
NA

Main Contractor
Mr Wong
Mechanical & Electrical Engineer
NA
Civil & Structural Engineer
NA
Images/Photos
tetavowe atelier

