

tetawowe atelier

www.tetawowe.com



tetawowe atelier is a dual partnership design practice founded by **WONG WEI PING** (right) and **TEY TAT SING** in 2009 in Kuala Lumpur, Malaysia. It is a young and dynamic design firm specialised in creating design narratives. The design workshop currently consists of passionate team members and occasional helpers from universities and colleges. This dynamic small team strives to provide design solutions that are robust, innovative and earthy. The firm has been involving in works on series of houses; by erecting new ones or breathing new life into old ones, commercial projects such as guest houses, retail spaces and small housing developments. The fundamental value of this team is to conceive works that acknowledge life and appreciate nature.

narrative in design process

The genesis of design always begins with stories or narrations - what is thought to be raw material taken from the site's existing rain trees, the geometrical shape of a site that is reminiscent of Miro's artwork, the way the owners would spend their lazy afternoon, birds on the wire, dialogue between the river and passer-by, a Beatles song, a banal jobsite depicted in a Kafka dreamlike space...all these have been the source of inspiration for tetawowe's designs. Tetawowe designs from a non-decorative approach, an honest use of material, no-frill detailing, always inclining towards the tactile: a bare brick wall 'painted' by the shadows of tree foliage, raw steel, a door bell mechanism adapted from a cowbell, custom-made recycle conduit task light system, integration of architectural space with plants and tropical semi-outdoor living room, a courtyard within a courtyard, conservatory, rooftop vegetable farm...

biography

Born in 1972, **TEY TAT SING** and **WONG WEI PING** both graduated from Cardiff University in 2000. Tey had graduated from Universiti Sains Malaysia with a Bsc USM and proceeded to complete his education at Cardiff University. He graduated with a B Arch Cardiff, and Wong graduated with a Bsc (hons) B Arch Cardiff. They joined the Architectural Network in 2003, and in 2009, founded Tetawowe Atelier. >



THE TEAM AT TETAWOWE ATELIER



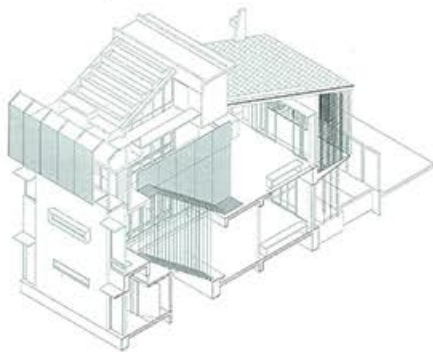
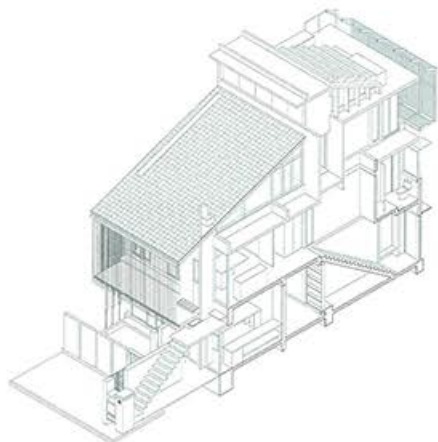
duo duplex in bangsar, kuala lumpur, malaysia

site area 1,200m²
 gfa 3,000m²
 architect in charge Wong Wei Ping
 design team
 Wong Wei Ping, Rey Tat Sing, Yap Xiao Yao, Goh Yih Chuan,
 Daphne Lim and Mohd Azmil
 contractor CH8 Construction
 completion 2013

Due to the nature of the brief and the concept of an interlocking duplex blocks, the duality of the blocks is expressed through the materials engaged, the lower part of the block has a more solid materiality, eg, off form concrete, clay bricks, and exposed services, whereas on the upper level, glass, steel cables and expanded wire mesh are used, to express the idea of lightness, transparency and voids.

The building programme of this house is simple, gathering spaces in the front of the house, and sleeping area located at the back of the house. Duplex 01 – at the ground floor and first floor (back), accessible at ground level by front yard and a pond – consists of a kitchen living room, and two bedrooms with ensuite baths. The lower unit functions as a studio unit on its own, this unit is connected by a stair core of black steel sheet and clear tempered glass which allows high permeability of daylight.

Duplex 02 – at first floor (front) and attic floor above, accessible by a pair of staircases – consists of a kitchen, living room with a balcony, a mezzanine sleeping deck and a bedroom with ensuite bath at the attic level, and a roof garden. The upper unit has a more structured layout as compared to the lower unit. The living space and kitchen could be extended to the outside when doors are folded entirely to the side. An additional floor is added to make space for one more bedroom while respecting neighbourly profiles. The approach of the upper unit also has multiple entrances that are separated from the lower unit; the architect's intention is to make the house more friendly and accessible.



spirit of the house

The spirit of the house is a fine blend of masculine construction and intricate spatial planning and detailing. The steel stairs, the timber deck, the courtyard and the roof garden, are all individual features of their own, that come together to complete the wholeness of the Duo Duplex. Hence, finishes and construction methods are put to high attention, conventional services needed to employ a subtle expression. For instance, rainwater is carefully channelled down into the fish pond by little weights tied to cables – as a substitute to having a rainwater down pipe.

Clever play of detail inspires one to be less intimidated by the concept of architecture. The relationship of the house with nature was formed when bright sunlight reflected by the green trees and water is drawn into the muted interior.

Fenestrations are strategically placed and scaled to foster a strong relationship with nature at every opportunity. Even the two stairs in the core of the house is designed to support this relationship. Different in characteristic, one is fully wrapped by perforated steel sheet, and another hung by steel rods. The porosity of the stairs were kept to a maximum to permit visual connection.

Fixtures are sensitively sculpted for comfort and ergonomically engineered. Unbiased to spatial requirement, it is a balance of fulfilling the essence of living and enhancing the quality of living through simplicity. A roof garden overlooks the entire neighbourhood and into the skylines of Kuala Lumpur. The house truly provides many little sanctuaries for the family to feel relaxed and rejuvenated.



capsule hotel at klia

site area 3,300ft²
gla 4,850ft²
project team
 Wong Wei Ping, Tay Tat Sing, Low Tau Peng, Ong Shien Chai, Chong Xiyin, Jooelyn Yong
lead EAG Consulting
m&e Zurech Sdn Bhd
c&e Perunding Reka SOG
lighting Mergman Electronic Malaysia
completion 2014

The design concept of Capsule by Container Hotel is inspired by the shipping container, for its modularity, flexibility and adaptability. It closely binds with the theme of travelling and our belief that container concept can be a potential solution to a sustainable future. The spatial planning concept is influenced by the Japanese style 'kyosho jutaku', which translates to living large on a tiny footprint. By maximizing the use of each space, we managed to fit in 79 capsules in a tight lot of 3,300ft² and other essential facilities for the hotel. Spatial transparency is emphasized to create continuity in a compact space. The vibrant colour scheme selected paired with an industrial approach strikes a balance of cheerful yet cosy environment for relaxation, in contrast to the formal and stringent greetings at the airport.

The Capsule also adopts a green and sustainable living concept, aiming to achieve LEED Certification. Construction materials were reclaimed and reused where it is suitable, and these materials could be taken apart and reused. Modular construction system is adopted to shorten the construction period and also reducing energy consumption.



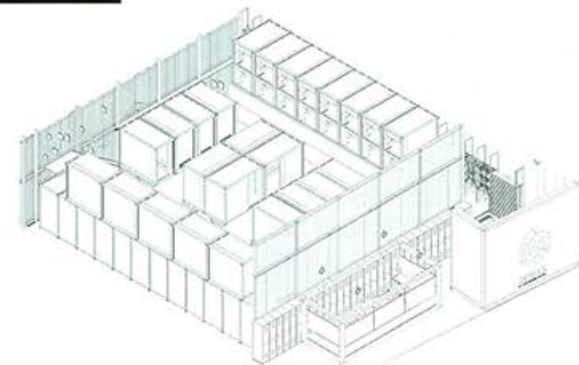
capspace

The Capspace features a total of 79 capsules stacked on three layers, mezzanine, upper and lower decks, separated into male and female zones. Each capsule is fully furnished by treated plywood and corrugated metal sheet, and is completed with the basic requirements of a hotel. The warm light illuminated softly on the container wall gives a tranquil feeling synonymous to sleeping in a shipping container on a journey to explore the world. Circulation of Capsule is carefully planned to control the security, separating male and female zones while connecting everyone to the common area, enabling the users to enjoy the complete Capsule Experience.

common library /lounge

The feature BRG wall functions as library bookshelves and buffer for male capsule. It also allows some natural light to illuminate the capsule. The library and lounge is furnished with reclaimed pallet sofa and tables; the cushy and warm atmosphere encourages a friendly gathering space.

*Featured in D+A Issue 081.2014 (INDUSTRIAL COCOONS)



STOREFRONT ELEVATION



INTERNAL ELEVATION 02



SECTION A-A



SECTION B-B