



capsule hotel

Capsule by Container Hotel has been designed to serve transit travelers, backpackers on-the-go and frequent flyers, offering a quick and convenient place to layover or recharge before hopping onto the next flight.



LOCATION
Transportation Hub of
Gateway@KLIA2,
Malaysia

LAND AREA
207 sqm

BUILT-UP AREA
451 sqm

ARCHITECT
DESIGNER
Tetovase Atelier

PROJECT TEAM
Wong Wai Ping, Tay Tai
Sing, Low Yu Peng,
Ong Shan Chi, Chong
Xyn, Jocelyn Yong

**PROJECT
COMMENCEMENT**
March 2014

**PROJECT
COMPLETION**
May 2014

LEED CONSULTANT
EAG Consulting

M&E
Zurash Bin Shih

CS
Perunding Reza SGG

LIGHTING
Migaman Electronic
Malaysia

PHOTOGRAPHY
Provided by Capsule
by Container Hotel

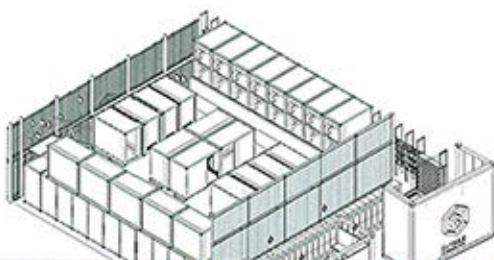
CAPSULE HOTELS, a concept more common in Japan, are essentially short-stay accommodations designed with the absolute minimum in conveniences while offering clean and secure short-term refuge. The Capsule by Container Hotel, on the other hand, is aimed specifically at transit travelers from the nearby newly completed low cost carrier terminal airport, Gateway@KLIA2. The inspiration for the design is obvious at a glance - shipping containers, which have become something of an icon for the series of Container Hotels by the client.

The use of shipping containers as the basis of the design is ironically apt - being related to the concept or theme of traveling

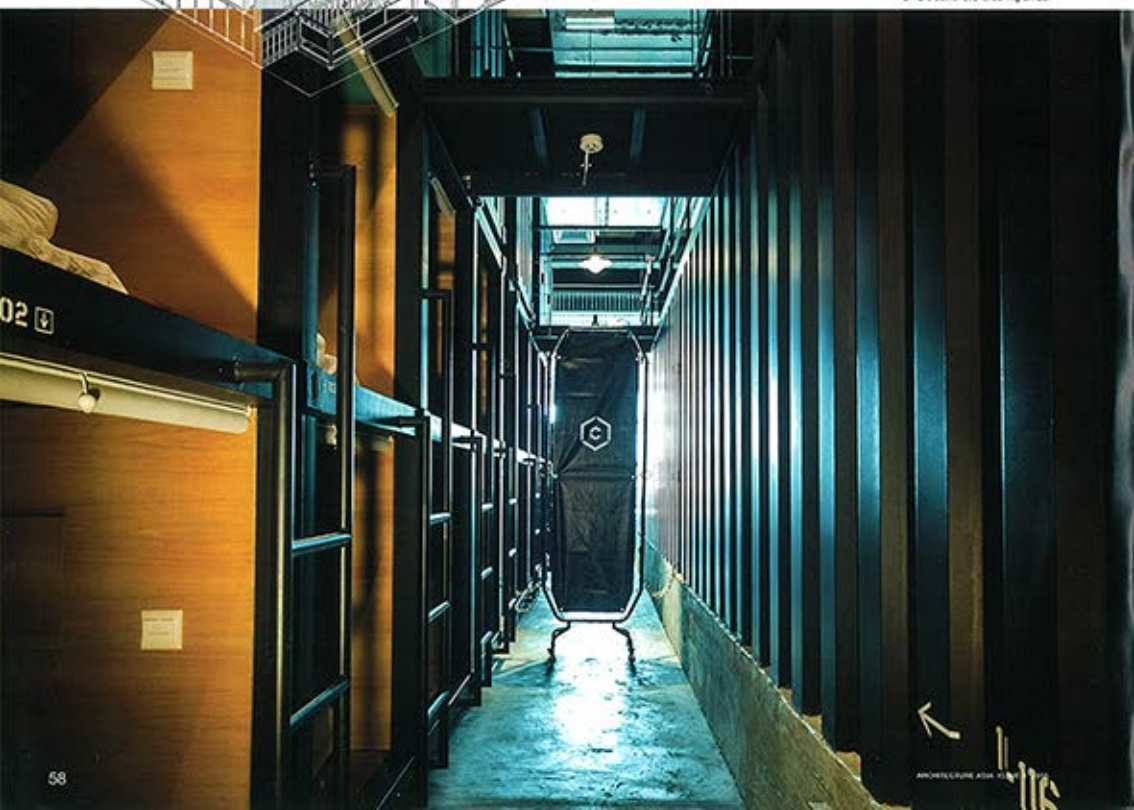
or moving from one location to another. In this case, the cargo is human!

As one approaches the shop-front, a bold-looking 'floating' container counter can be seen. While standing in front of the floating concierge that is monotonously finished, colorful stacking containers in the Capspace (the guestrooms) can be seen through the transparent BRC walls behind the luggage lockers. The play of colors here serves as the primary form of visual attraction - to draw out the curiosity among potential customers to explore more of the hotel.

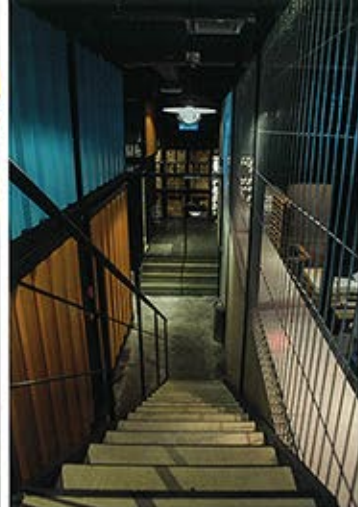
Baggage and backpacks are kept in luggage lockers and important things can be brought into the



Simple but functional zoning divider



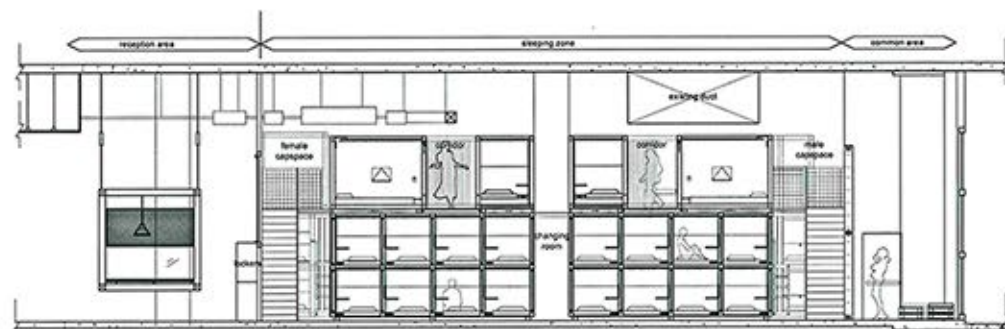
Beer crates are cleverly reused as storage shelves



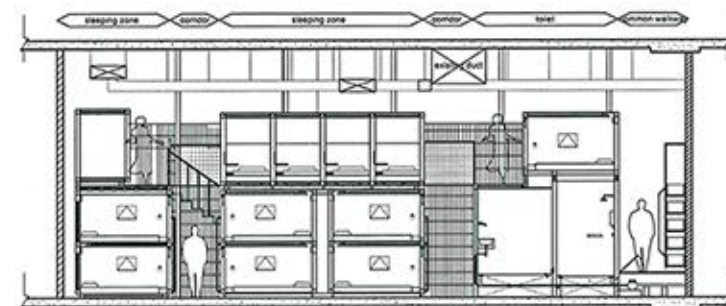
Staircase to the mezzanine floor



Environmental friendly storage with recycled wooden crates as part of the shelving system



SECTION A-A



SECTION B-B

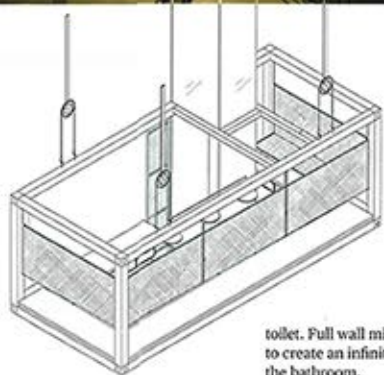
Capspace with the amenity bags provided. Shoe shelves are made of illuminated PVC pipes, forming the logo of Container Hotel, while also serving as a form of 'welcome' to the guest before entering the Capspace and bathroom area.

The modular shelves along the raised common walkway towards the male Capspace and common lounge incorporate linen storage, recycle bins and a janitor's area. It is made of a steel structure, reclaimed wooden crates and beer crates. The combination of these rustic shelves with the industrial



TOP LEFT:
Drab
bathrooms
subdivided
by cement
boards and VMS
frames

TOP RIGHT:
The elevated
corridor



capsules is flexible by adjusting the position of movable partitions. Each capsule is fully furnished by treated plywood and corrugated metal sheets. The capsules are also equipped with a foldable table with built-in mirror, charging box/locker, power point, hangers, reading lights, individual ventilation and a slippers box. There is no door but a roller blind provides a sense of privacy. The experience of being in one of the capsules is topped off with warm reflected light off the container wall - providing a tranquil feeling somewhat

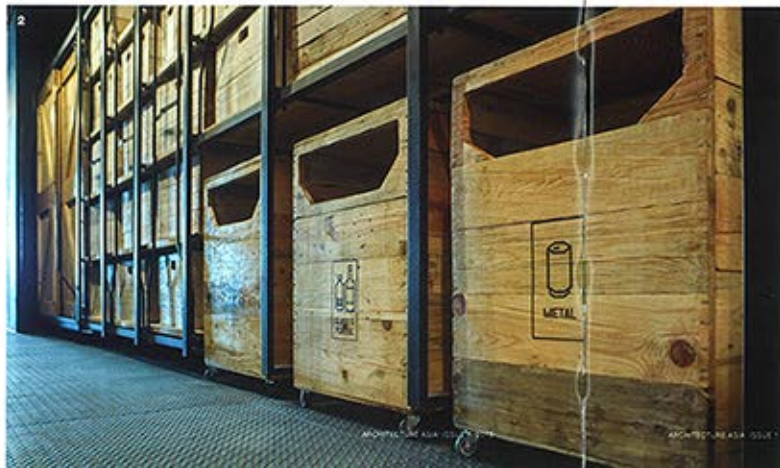
akin to sleeping in a shipping container, on a journey to explore the world.

The feature BRC wall functions as library bookshelves and buffer for the male areas of the Capspace. It also allows some natural light to illuminate the Capspace. The library and lounge are furnished with reclaimed pallets made into sofas and tables. Lastly, the circulation of Capsule has been carefully planned to control security, separating male and female zones, while connecting everyone to the common area. [202](#)

■ Suspended
segment
container frames
used for the
position
counter

■ Recycled
wooden boxes
as recycle bins

■ The Capsule
Hotel logo is
formed by the
careful
arrangement of
100mm diameter
UPVC pipes



lamps and gigantic toilet exhaust pipes help turn an otherwise drab narrow pathway into an artistically industrial experience.

The bathroom is one of the most challenging parts of the hotel design. The floor had to be raised up to accommodate services below. There are also capsules sitting on top of the toilet, resulting in the low headroom of the

toilet. Full wall mirrors are used to create an infinite reflection of the bathroom.

The floor and walls of the bathrooms are finished with cement boards, as well as the custom made door. Galvanised iron pipes and reclaimed hardwood form the industrial sink countertop.

The Capspace itself features a total of 79 capsules, stacked on three layers (mezzanine, upper and lower decks), and is separated into male and female zones. The number of male and female