

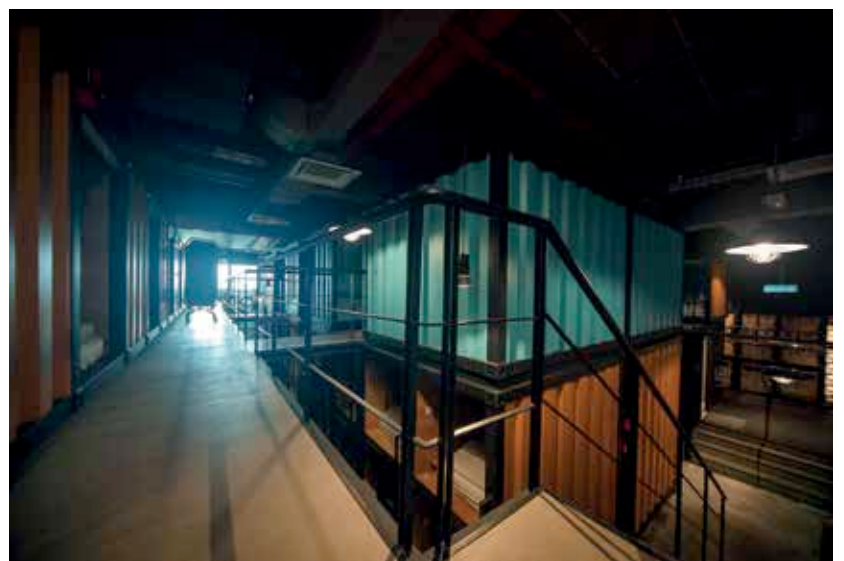
# industrial cocoons

BY KENNETH CHEONG | IMAGES COURTESY CAPSULE BY CONTAINER HOTEL  
PLANS AND DRAWINGS COURTESY TETAWOWE ATELIER

Capsule hotels, a quintessential fixture in Japanese megalopolises was conceived as a short-stay transit accommodation synonymous with the drunken Japanese salaryman who had missed the last train home to the suburbs. A new breed of capsule hotels cater to a more discerning clientele – the informed urban nomad on a budget. In Kyoto, 9h (nine hours) offers the most utilitarian of creature comforts in minimalist interiors. Closer to home, Capsule by Container Hotel, designed by Wong Wei Ping of Tetawowe Atelier, veers towards an industrial aesthetic which plays on the iconography of modularity.

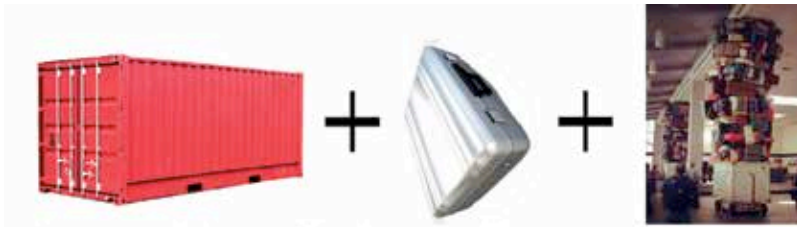
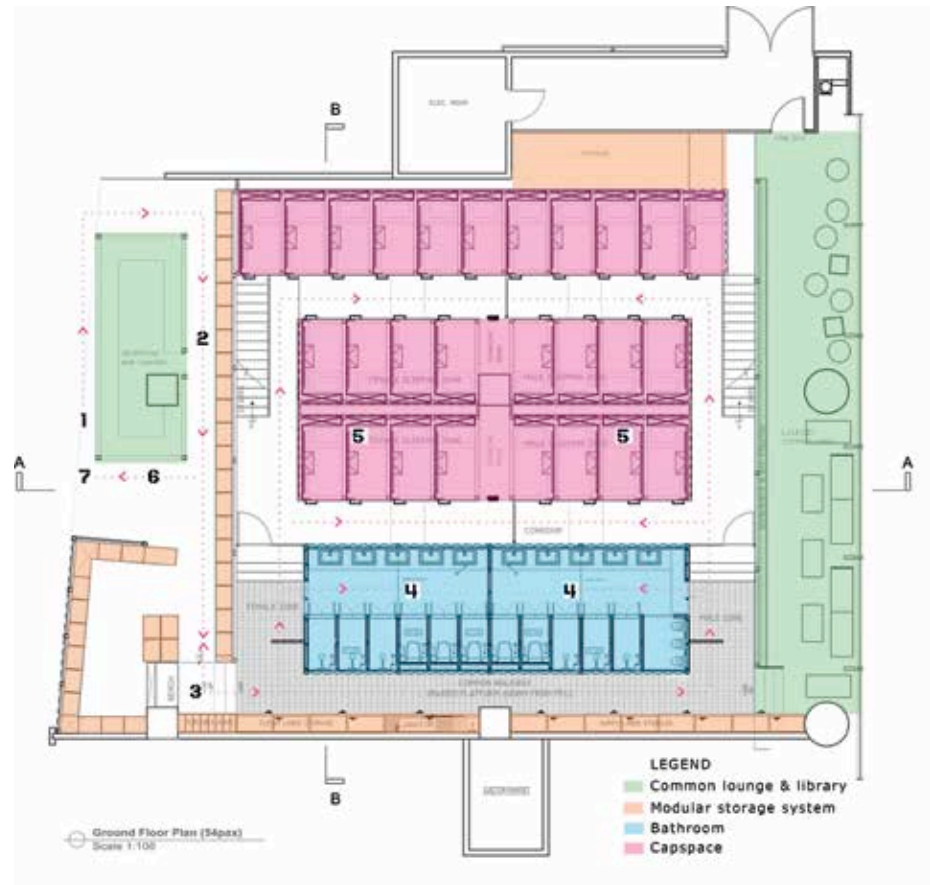
# T

etawowe Atelier's concept and planning of Capsule by Container Hotel was inspired by shipping containers which have become an icon for the Container Hotel brand, and represents the ethos of the brand to quickly replicate a hotel from a modularised kit of parts to conform to any site configuration. Located at Gateway@KLIA2, Kuala Lumpur's newly completed Low Cost Carrier Terminal, Capsule by Container Hotel is designed for transit travellers, backpackers on-the-go and frequent flyers. With a floor area of 3,300ft<sup>2</sup> (306.6m<sup>2</sup>) and a clear height of 6 metres, Wong extrapolated the Cartesian volume to 4,850ft<sup>2</sup> (450.6m<sup>2</sup>) by inserting a mezzanine floor to house a total of 79 capsules. The plan is laid out in a sequence of spaces which encapsulates a hierarchy of rituals typical of the standard capsule hotel. Numbered typographical icons mark each space as a means of way-finding.

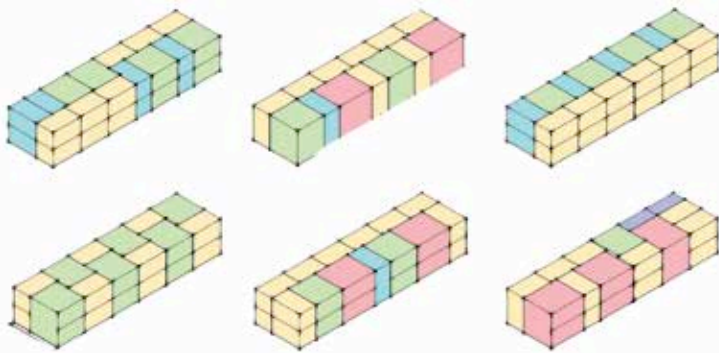




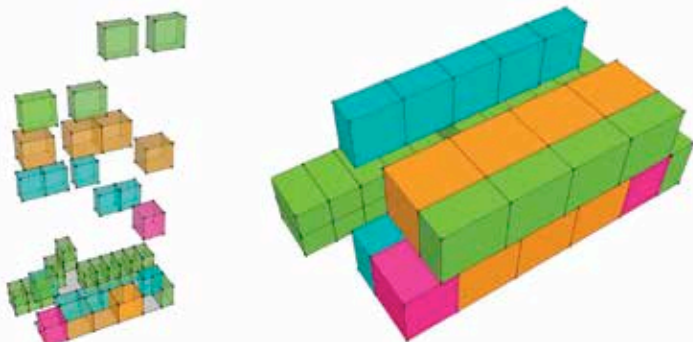
- CAPSULE EXPERIENCE**
- 01 CHECK-IN
  - 02 LOCKERS
  - 03 SHOE STORAGE
  - 04 FRESHEN UP
  - 05 REST WELL
  - 06 CHILL OUT
  - 07 CHECK-OUT



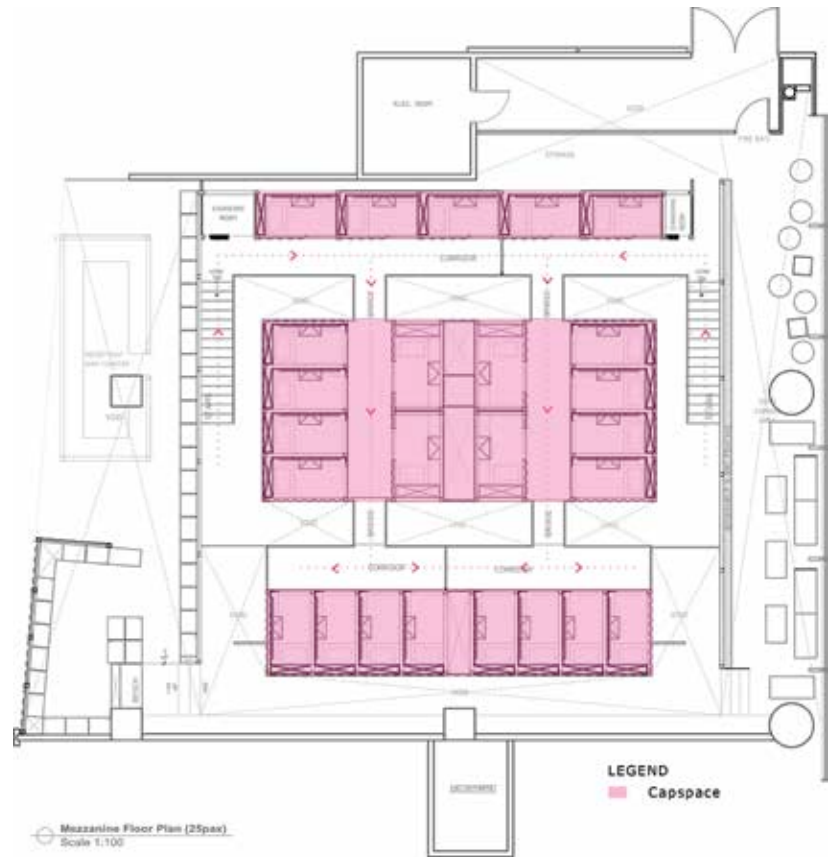
The concept and planning of Capsule is inspired by container which closely binds with the theme of travelling



Flexible planning of modular capsules in a compact space



Massing and planning of capsule module in Capspace



**CAPSULE BY CONTAINER HOTEL IN GATEWAY@KLIA2**

- DESIGN** TETAWOWE ATELIER  
**PROJECT TEAM** WONG WEI PING, TEY TAT SING,  
 LOW TZU PENG, ONG SHIEN CHII,  
 CHONG XIYIN, JOCELYN YONG  
**LEED** EAG CONSULTING  
**M&E** ZUMECH SDN BHD  
**C&S** PERUNDING REKA SCG  
**LIGHTING** MEGAMAN ELECTRONIC MALAYSIA

## the capsule experience

### 01 CHECK-IN

At the entrance, a hovering bar-and-concierge desk housed in a suspended steel hollow section frame serves to suggest the transient nature of the facility. A screen of modular pre-fabricated steel security fencing provides a secure and transparent enclosure to the sleeping area beyond. The sleeping capsules are housed in shipping containers painted in the brand's signature orange, punctuated with containers painted in cerulean, to become a montage of colour blocks beyond the screen as a backdrop to the entrance reception hinting of the modular innards within.

### 02 LOCKERS

Beyond the point of entry are lockers for luggage storage. Baggage and backpacks are kept in the luggage lockers with smaller personal items brought into the Capspace with a complimentary amenity bag.

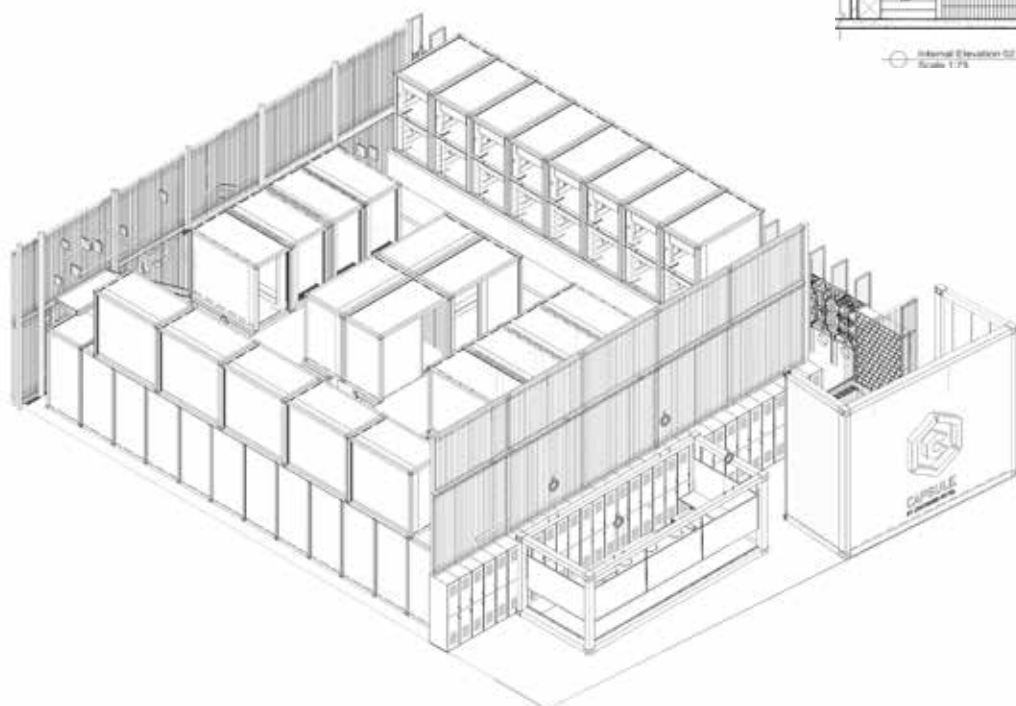
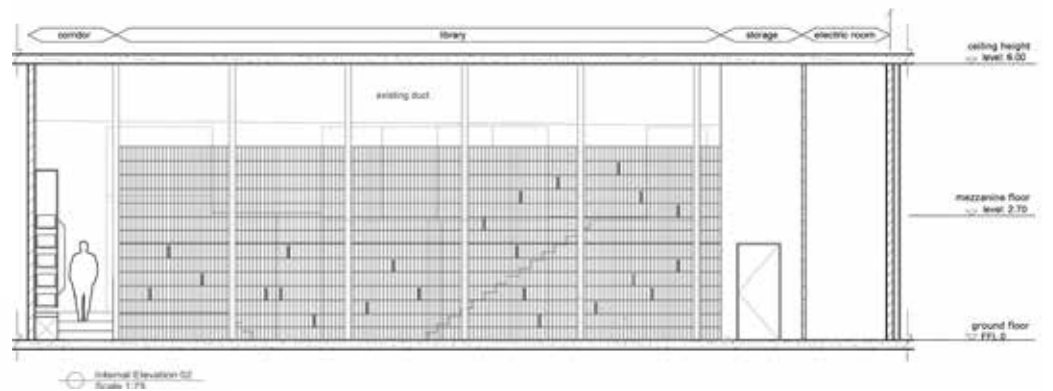
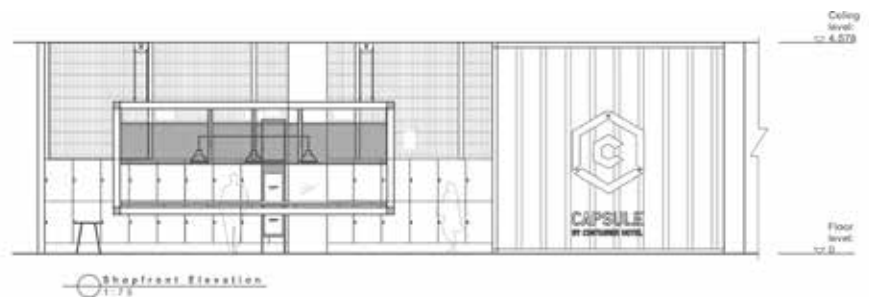
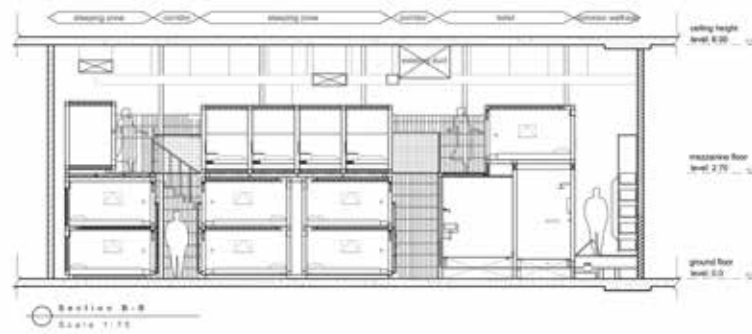
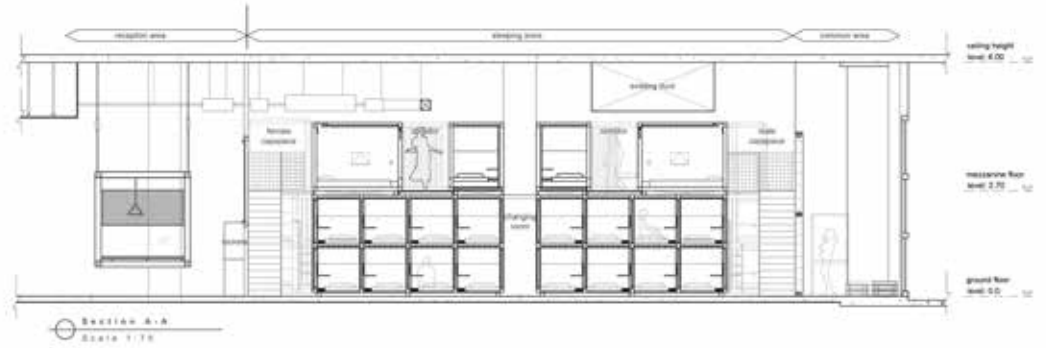
### 03 SHOE STORAGE

The locker alcove leads to a back-lit feature wall composed of PVC pipe sections to house complimentary slippers to be worn inside the hotel space. The brand's logo is formed with blacked out sections in the feature wall, and marks the entry into the Capspace. The floors throughout the internal hotel space is finished in textured sheet metal to compliment the industrial aesthetic of Capsule by Container Hotel.

A raised corridor leading to the male Capspace and common lounge is lined with a modular storage system feature wall composed of a steel skeletal frame inserted with modular reclaimed wooden and beer crates for linen storage, recycle bins and to conceal a janitor's room. The toilet exhaust ducts are left exposed. Industrial lamps, fixed on steel pipes extended from the main steel skeletal structure of the modular storage feature wall, illuminate corridor with an industrial lustre.

### 04 FRESHEN UP

According to Wong, the bathroom facilities is one of the most challenging part of the hotel design, due to the low headroom. The platform level was raised to house the services below, resulting in the clear height of the bathrooms to be reduced to 2.3 metres. Corrugated steel sheets form the walls of the exterior with the internal floors and walls finished with cement boards. The shower cubicles and bathrooms come with double swing doors custom-made from a steel carcass with cement board infill.





Sections of galvanised iron pipes were assembled to form the frame of the industrial sink countertop, with reclaimed hardwood running the length of the bathroom as a vanity top. Full height mirrors were strategically positioned on opposite ends of the bathroom to create an infinite reflection of the internal space.

#### 05 REST WELL

The Male and Female Capspace is composed of double-stacked capsules on the lower level with a single layer of capsules on the mezzanine floor. A movable partition separates the Male and Female Capspace to allow for flexibility in expanding and contracting the number of capsules required for each zone. Each capsule is designed as a cocoon with corrugated metal sheet complimented with a honey-toned treated plywood finished partition. A collapsible table with built-in mirror, charging box-cum-locker, power point, hangers, reading light, individually controlled ventilation and slipper box are designed and housed into the plywood finished partitions.

#### 06 CHILL OUT

Two over-laid layers of security fencing form a porous screen to the library and lounge common area. The cavity between the two layers of metal mesh are in-filled with mesh trays as shelving units. The screen will eventually be filled with books from the library to be rendered opaque. The library and lounge, a communal gathering hub to linger and interact outside of the capsules, is furnished with reclaimed pallets fashioned into tables and sofas with ample cushioning to contrast with the hard industrial surfaces of the circulation space

#### 07 CHECK-OUT

In Capsule by Container Hotel, Tetawowe Atelier has encapsulated the iconography of modular systems with an industrial aesthetic that perfectly captures the spirit of capsule hotel design for the Container Hotel brand. +